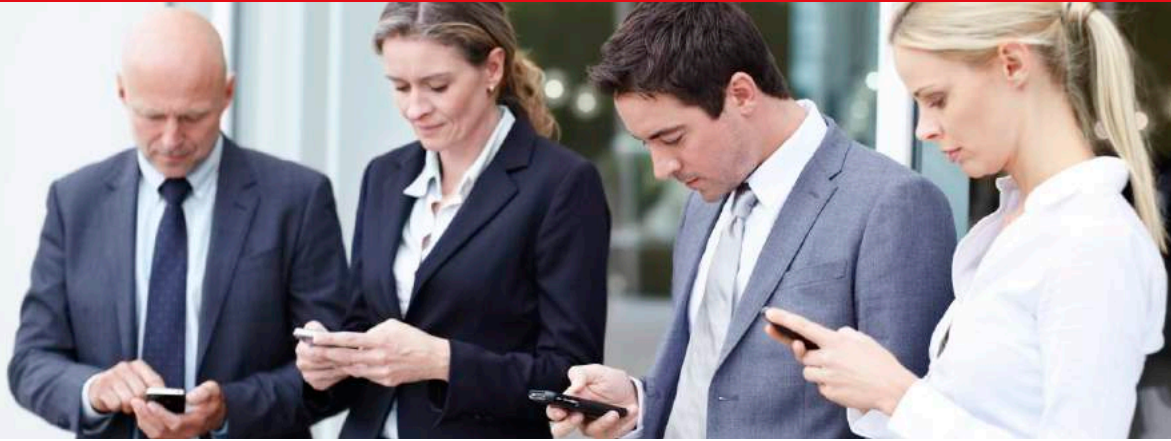


# Enterprises



## OVERVIEW

Wireless users spend more than 80% of their time indoors – inside buildings – be it offices, corporate parks, shopping malls, residential townships etc. Existing in-building coverage solutions are costly to deploy and difficult to install. When in building coverage is provided via outdoor base stations, issues are observed related to user experiences. Large campuses may have many such high rise buildings spread across different geographical locations.

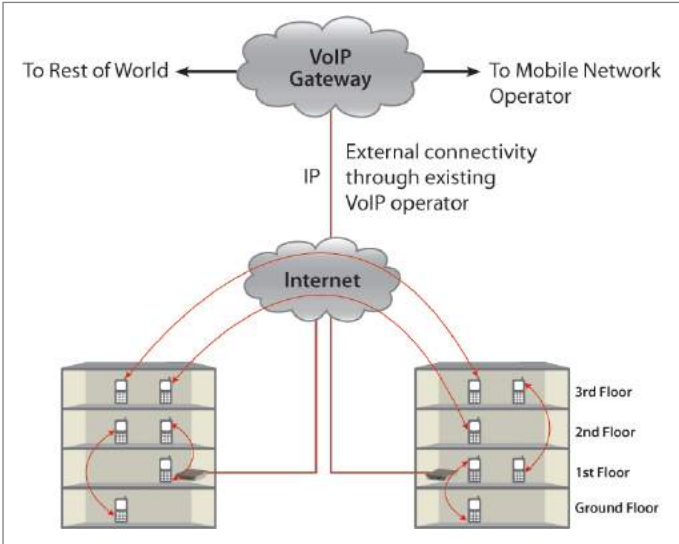
Omoco enables owners of these buildings/ organizations setting up quick and cost effective private mobile network. The box, when deployed, can also interface with cost effective enterprise PBX, VoIP operators/MNO operators to extend the communication to the outside world.

Single Omoco Box has sufficient RF power output to feed DAS for upto 8 floors of approx 10,000 sq ft each.

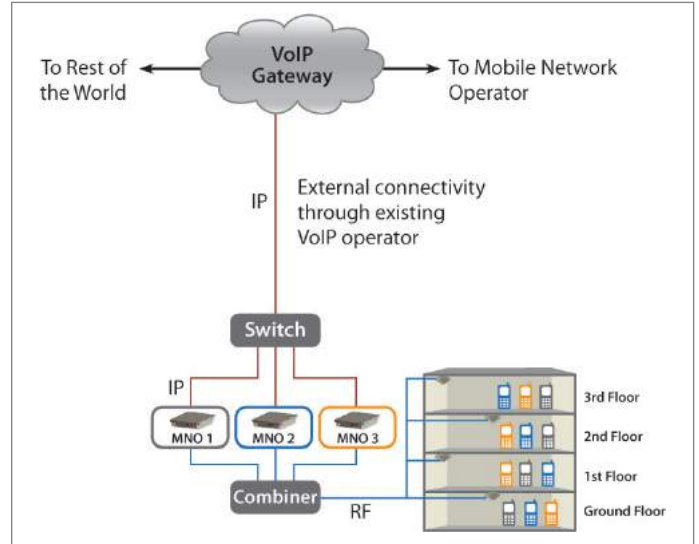
Omoco based solution enables connecting multiple locations using IP network, allowing a multi-location private mobile network.

## HIGHLIGHTS

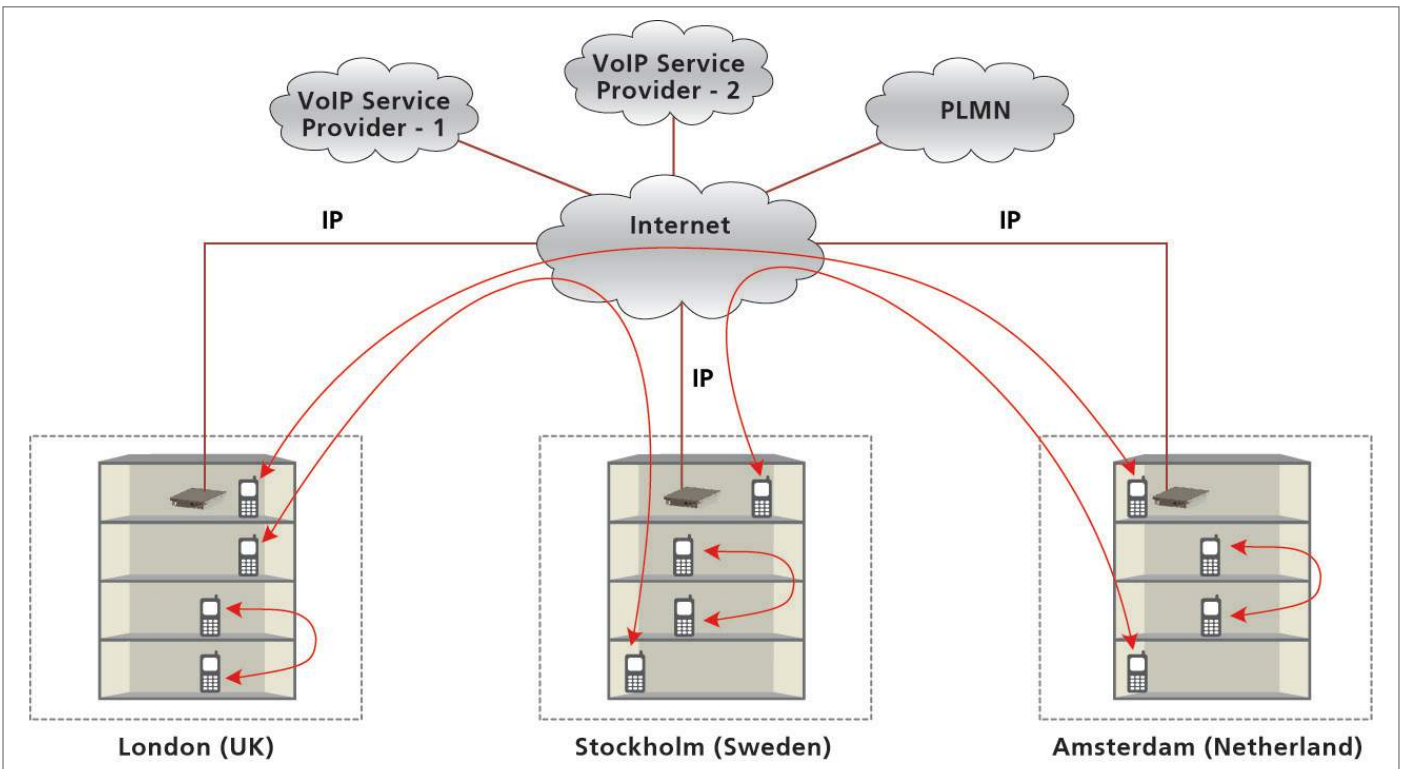
- ④ Unified Platform for GSM Services
- ④ Small and Highly Integrated – Easy to Carry GSM Network
- ④ Local Voice Offload
- ④ Interworking with Existing Enterprise/ Service Provider Infrastructure
- ④ Connect to Multiple Service Providers (VoIP, PLMN)
- ④ Scalable Architecture
- ④ Multi-Location Enterprise Network
- ④ Guaranteed Coverage and Capacity
- ④ Multiple Backhaul Connectivity Option – Radio, Fiber and Satellite
- ④ Choice of Handsets & Smart Phones
- ④ Superior Coverage than DECT
- ④ Quick Deployment
- ④ Easily Managed by IT



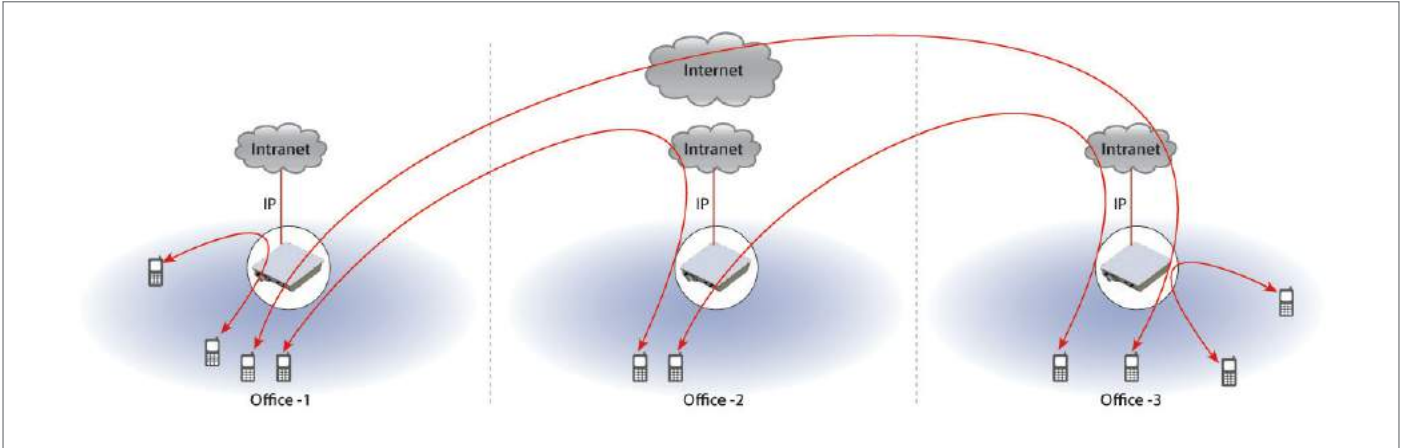
Typical enterprise connectivity



Multiple operators can extend their coverage into the enterprise or campus



As Omoco enables an all IP solution, multiple offices across different geographical locations can be connected through internet



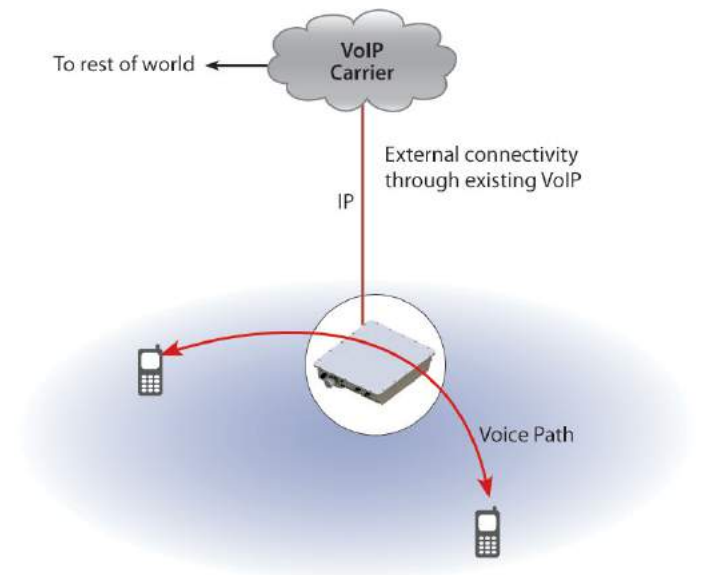
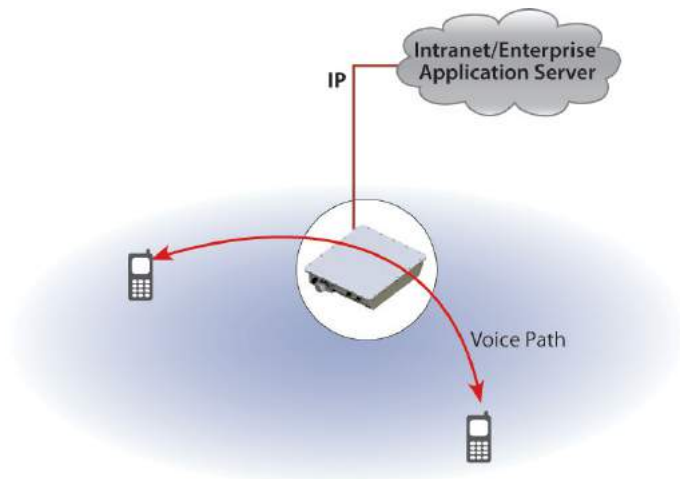
**Typical enterprise connectivity**

- ⊗ Omoco with RF output of +33dBm can cover approximately 80,000 sq ft of area
- ⊗ Coverage can be distributed across multiple floors of single tenant
- ⊗ Up to 1000 subscribers can be catered using single box
- ⊗ Multiple Tenants in building can be served with individual Omoco units

**Integrated with VoIP service provider:** With the base of autonomous GSM system, it has capability to extend the network and provide integrated communication system using standard protocols and interfaces. As shown in the diagram Enterprise mobile network can be connected to any VoIP service provider and enterprise's existing infrastructure (PBX) via IP.

**OPERATING MODES**

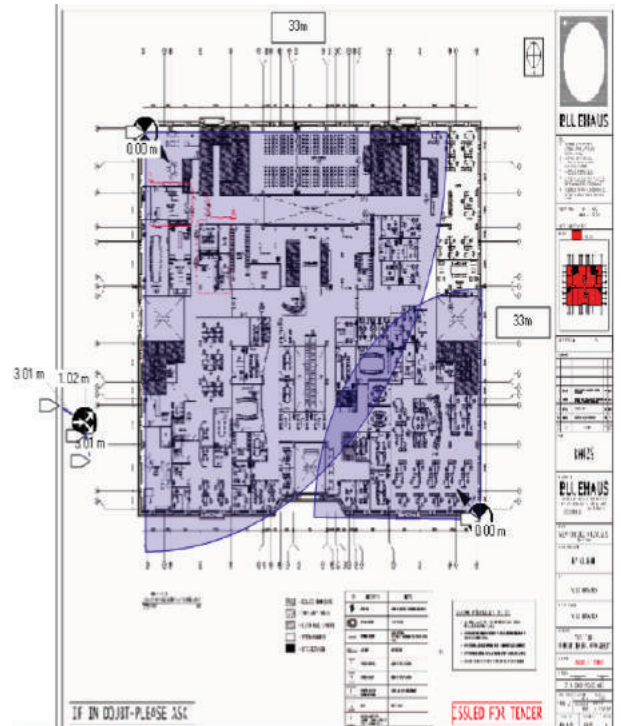
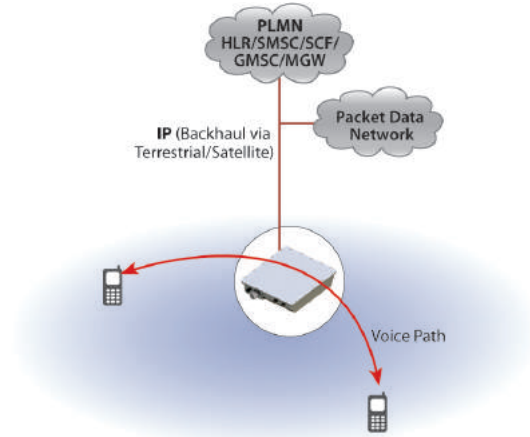
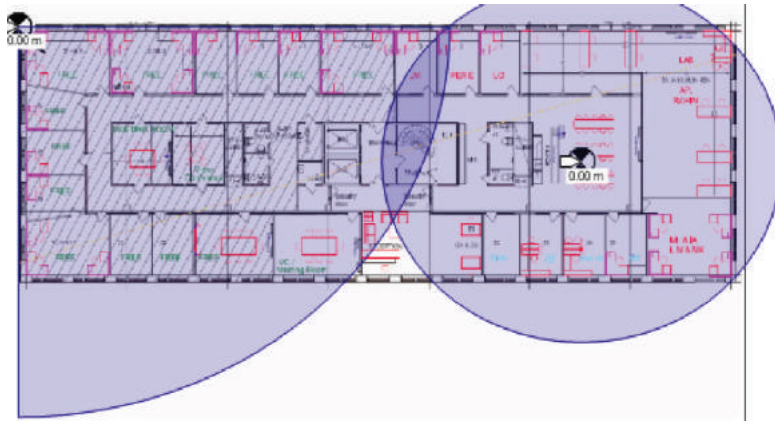
**Standalone/Autonomous:** In standalone mode, Enterprise network as an island with complete coverage. All subscribers can be managed without any dependency on external networks.



**Interconnectivity with service provider**, like mobile network operator allow them to extend and enhance their footprint and coverage. It is based on standard 3GPP mobility and roaming procedures, allowing seamless movement of it's subscribers from one system to other.

**COVERAGE DEPICTION**

- ⊗ BTS – 33dBm Power
- ⊗ 10,000sq ft or 1000 sq m per floor
- ⊗ GSM 1800 Band with expected RSSI -65dB for Rectangular Coverage Area



**ABOUT OMOCO**

Omoco develops Do-it-yourself Private GSM Network hardware suitable for individuals, enterprises and communities who want to build their own private wireless communication network.

Omoco enables both self contained and integrated private cellular network solutions for enterprises in a wide selection of vertical sectors including: construction, airports, hotels and resorts, offshore, tea estates, warehouses, homeland and military services. Omoco enables remote communities to build their own wireless communication network. Omoco is available off-the shelf and its DIY design makes it an ideal choice to Build-Your-Own-Network.

Omoco sells hardware platform only. Powered by

© 2014 Omoco | All rights reserved  
 Omoco assumes no responsibility for any inaccuracies in this document.  
 Omoco reserves the right to revise this document without notice.

**CONTACT US**

Email: [sales@omoco.in](mailto:sales@omoco.in)  
<http://www.omoco.in>